



SOUTH BURLINGTON HIGH SCHOOL

"BUILDING A PROUD TRADITION"

PROFILE 2015-2016

<http://sbhs.sbschools.net>

550 Dorset Street
 South Burlington, VT 05403
 Guidance phone: 802-652-7060
 Guidance fax: 802-652-7371
 CEEB code: 460413

Patrick Burke, Principal
 Timothy Wile, Guidance Director
 Nikki St. Mary, School Counselor
 Chuck Soule, School Counselor
 Lindsey Hudson, School Counselor
 Halina Gangi, School Counselor
 Peg Adams, Registrar
 Gayle Eustis, Administrative Assistant

THE COMMUNITY

South Burlington is a city of approximately 18,000 residents located near Lake Champlain in the northwestern part of the state. The city is a suburban community situated in the state's urban core.

THE SCHOOL

South Burlington High School is a comprehensive high school with an enrollment of approximately 900 students in grades 9-12. The school presently offers accelerated and honors programs in English, social studies, mathematics, world language, technology and science. Approximately 4% of SBHS students are currently enrolled in courses at area technical centers.

ACCREDITATION

South Burlington High School is accredited by the New England Association of Schools and Colleges, Inc. and by the Vermont State Department of Education.

COLLEGE PLACEMENT

Approximately 77% of our students will continue their education at 4 year institutions immediately following graduation.

NATIONAL MERIT PROGRAM DISTINCTIONS

For the 2014-2015 school year, 6 students received Letters of Commendation.

GRADUATION REQUIREMENTS

The completion of a minimum of 20 credits is required for graduation. The class of 2015 earned an average of 26.03 credits.

Requirements include:

- English** - 4 credits
- Social Studies** - 3 credits
- Mathematics** - 3 credits
- Science** - 3 credits
- Information Technology** - .5 credit
- Fine Arts** - 1 credit
- Health** - .5 credit
- Physical Education** - 1.5 credits

ACADEMIC INFORMATION

South Burlington High School does not compute class rank.

Honors distinctions at graduation are based on the following:

- Summa Cum Laude** = GPA of 4.1-4.33
- Magna Cum Laude** = GPA of 3.8-4.0
- Cum Laude** = GPA of 3.5-3.7

AVERAGE GPA FOR CLASS OF 2015: 3.275

DEFINITION OF COURSE LEVELS

Most challenging: AP, Accelerated (ACC) and Honors (HON)

Challenging: Level 1 (L-1)

Less Challenging: Level 2 (L-2)

Where applicable, the level is indicated on transcripts. Most English, social studies and world language classes are heterogeneously grouped.

All courses are given equal weight in computing GPA. The student's grade is given point values according to the following scale. Courses with different credit values (e.g. lab sciences are 1.5 credits) use the same ratio as this scale.

GRADE	RANGE	PLUS/MINUS
A+	97-100	4.33
A	93-96	4.00
A-	90-92	3.67
B+	87-89	3.33
B	83-86	3.00
B-	80-82	2.67
C+	77-79	2.33
C	73-76	2.00
C-	70-72	1.67
D+	67-69	1.33
D	63-66	1.00
D-	60-62	0.67
F	Below 60	0.00
P	PASS	
I	INCOMPLETE/NO GRADE	
AU	AUD	

ADVANCED PLACEMENT

AP courses, taught in the building, and available to juniors and seniors, are French, Spanish, English, European history, US government and politics, psychology, calculus, statistics, biology, chemistry, environmental science, physics, and computer science. While we do not limit the number of AP classes students can take, we encourage them to be thoughtful about their level of challenge. Additional AP courses are available through VTVLC (see description below, in **Special Programs** section). For course description refer to the SBHS [Programs of Study](#), available online at <http://sbhs.sbschools.net>

AP SCORES FOR 2014-2015

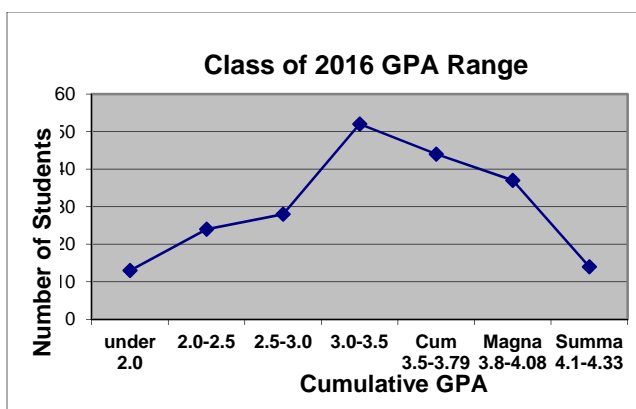
Total # of SBHS taking AP exams	Total # of Exams	Mean Score SBHS AP Students	Mean Score Vermont AP Students	Mean Score United States AP Students	Mean Score Global AP Students
178	348	3.15	3.06	2.82	2.84

ACT SCORES FOR 2014-2015

	ENGLISH	MATH	READING	SCIENCE	COMPOSITE
SOUTH BURLINGTON	24.3	24.1	25.0	24.4	24.5
VERMONT	23.2	23.0	24.1	23.2	23.5
UNITED STATES	20.4	20.8	21.4	20.9	21.0

SAT MEAN SCORES FOR 2014-2015

	READING	MATH	WRITING
S. BURLINGTON	548	551	534
VERMONT	523	524	507
UNITED STATES	495	511	484



Data based on 6 semesters for 212 students in the class of 2016

CO-CURRICULAR ACTIVITIES AND CLUBS

South Burlington High School offers a wide range of co-curricular activities: Art Club, Backcountry Ski Club, American Sign Language, Athletic Leadership Council, Coalition for Community Service, D.E.C.A., Dartmouth Model UN, Drama, French Club, Future Educators of America, Gender and Sexuality Alliance Club, The Green Team, Interscholastic and Intramural activities, International Cuisine and Culture Club, Journalism Club, Key Club, Math League, Medical Club, Mountain Biking Club, Multi-Media Lab, National Honor Society, NextGenVest, Outing Club, PACTeens Club, Robotics Club, Rowing Club, Rugby Club, Scholars' Bowl, Smash Club, Speech/Debate Club, Strength & Conditioning Club, Student Council, Trebel a Cappella, Table Tennis Club, Unified Sports, Volleyball Club, and VT Teens Against Dating Violence.

SPECIAL PROGRAMS

- **The Career Development Center (CDC)** places students in work settings for shadowing, mentoring and internships, and in peer tutoring and other volunteer opportunities.
- An active student exchange program (**TIE**) is held with students from France, Germany, Japan, and Spain, and there are service-learning trips (e.g. Habitat for Humanity) throughout the year.
- **High School Completion Program (HC)** - promotes community and competency based learning in coordination with Vermont Adult Learning.
- **Big Picture South Burlington (BPSB)** - an additional profile will accompany transcripts for students in this program.
- **Progressive Program/LEAP** - These two programs offer more small group and individual support.
- **ELL** – support for beginning and intermediate level learners of English as a second language. Most course work for students in these levels is provided in core courses team taught by core area teachers and an ELL teacher.
- **VTVLC** - SBHS is part of the [Vermont Virtual Learning Cooperative](#) (VTVLC) which allows students to sign up for online courses to broaden their studies or to meet graduation requirements. VTVLC courses are taught by certified teachers from cooperating schools.
- **Early College Program (EC)** - The state of Vermont offers students the opportunity to enroll in select colleges full-time during their senior year.

STUDENTS IN THE CLASS OF 2015 WERE ACCEPTED AT THE FOLLOWING SCHOOLS:

Adelphi University	University of Delaware	Long Island University, Brooklyn	Piedmont Technical College	State University of New York, Potsdam
University of Alabama, Tuscaloosa	University of Denver	Long Island University, Post	University of Pittsburgh	Syracuse University
Albany College of Pharmacy	Drake University	Loyola University, MD	Plymouth State University	University of Tampa
Alfred University	Drexel University	Lyndon State College	Providence College	Temple University
American International College	Eastern Nazarene College	University of Maine	Purdue University	Tennessee State University
American University	Elon University	Manhattan College	Queens University of Charlotte	University of Texas, Arlington
Arizona State University	Emerson College	Marist College	Quinnipiac University	Thomas College
Assumption College	Emmanuel College	University of Maryland, College Park	Rensselaer Polytechnic Institute	University of Toronto
College of the Atlantic	Fairfield University	Massachusetts College of Art & Design	University of Rhode Island	Trinity College
Barnard College	Florida Atlantic University	Massachusetts College of Pharmacy & Health Sciences	University of Richmond	Tufts University
Bates College	Florida State University	University of Massachusetts, Amherst	Rider University	Tulane University
Bay Path University	Fordham University	University of Massachusetts, Boston	Ringling College of Art & Design	University of Tulsa
Bentley University	Franklin Pierce University	University of Massachusetts, Lowell	Rivier University	Union College
Bishop's University	Gannon University	McGill University	Rochester Institute of Technology	Unity College
Boston University	George Mason University	Mercyhurst University	University of Rochester	The University of Northwestern Ohio
Bowdoin College	George Wash University	Merrimack College	Roger Williams University	Vermont Technical College
Brandeis University	Georgia Institute of Technology	Metropolitan State University of Denver	Sacred Heart University	University of Vermont
Bridgton Academy	University of Georgia	Miami University, Oxford	St Anselm College	Villanova University
Brown University	Gettysburg College	University of Miami	Saint Michael's College	Virginia Tech
Bryant University	Green Mountain College	Michigan State University	College of St. Rose	University of Virginia
Butler University	Grinnell College	University of Michigan	San Diego State University	Wagner College
Carleton University	Hampshire College	Middlebury College	University of San Francisco	Wellesley College
Case Western Reserve University	University of Hartford	Missouri Valley College	Santa Clara University	West Virginia University
Castleton State College	Harvard University	Monmouth University	Savannah College of Art & Design	Western New England University
Catholic University of America	High Point University	Monroe Community College	Siena College	Worcester Polytechnic Institute
Cazenovia College	Hobart & William Smith Colleges	Mount Holyoke College	Simmons College	Wright State University
University of Central Florida	Hofstra University	Muhlenberg College	Skidmore College	
Champlain College	Hudson Valley Community College	New England College	Smith College	
College of Charleston	Illinois Institute of Technology	University of New England	University of South Carolina	
University of Cincinnati	Indiana University, Bloomington	University of New Hampshire	University of South Florida, Tampa	
Clark University	University of Iowa	Nichols College	University of Southern California	
Clarkson University	Ithaca College	University of North Carolina, Charlotte	University of Southern Maine	
Clemson University	James Madison University	University of North Carolina, Wilmington	Southern New Hampshire University	
Coastal Carolina University	Johnson & Wales University (North Miami)	North Carolina State University	St. Bonaventure University	
Colby College	Johnson & Wales University (Providence)	Northeastern University	St. Lawrence University	
Colby-Sawyer College	Johnson State College	University of Northern British Columbia	State University of New York, Plattsburgh	
University of Colorado, Boulder	Keene State College	Norwich University	State University of New York, Albany	
Columbia University	Kettering University	Pace University	State University of New York, New Paltz	
Community College of VT	Keuka College	Paul Smith's College	Sterling College	
Concordia University	University of King's College	Pennsylvania State University	Stevenson University	
Connecticut College	Kutztown University	University of Pennsylvania	Suffolk University	
University of Connecticut	Lafayette College		State University of New York, Brockport	
Curry College	Lasell College		State University of New York, Geneseo	
D'Youville College	Lehigh University			
Dalhousie University	Liberty University			
Dartmouth College				